

The Signal Box Studio

2024

Studio 6 / 46 Balfour St
Chippendale NSW 2008

hello@thesignalbox.com.au
+ 61 466 380 704

01

The Space



01

About

Our production studio is fully equipped for photography and video production.

Located in the heart of Chippendale, the studio space is 32 square metres with four metre high ceilings, equipped with a 2.7m wide paper roll background with white, grey, and green screen backdrops available.

The studio is acoustically treated for high quality audio recording. Best use cases range from portrait, product, fashion, food, piece-to-cameras, interviews, and online content video production. A tried and tested space to capture content for integrated campaigns through to internal corporate content, all with streamlined production and post production workflows in mind.

NOTE: Being located up flights of stairs, we are sadly not wheelchair accessible.

01

Studio Essentials and Amenities

All studio essentials and amenities are included with any hire.

- Paper roll cyc: 2.7m wide (white, green, or grey)
- 10kg shotbags
- 4x Large Manfrotto Light Stands
- 1x Combo Stand 4.25m With Wheels
- Extension cords and powerboards
- Fully stocked Kitchenette
- Unisex toilet and shower
- High Speed Wifi & Ethernet 400mbps up/down
- Breakout area
- A4 & A3 Printer



02

Usage



02

Filming

This versatile, acoustically treated space is ideal for pieces to camera, green screen, interviews, live cross, and corporate content. You can choose between a controlled lighting environment perfect for green screen or paper roll backgrounds, or you can open the blinds to natural sunlight coming in from two sides. In addition, some setups have chosen to not use the backdrops and use the industrial chic white painted brick and heritage wooden floorboards.



02

Photography

An ideal inner city photography setting for fashion, food, product, portrait, and corporate photography. In particular, the uniqueness of the lighting environments in a warehouse loft setting, shifting from controlled lighting to all natural light, allows for a multitude of looks in the single location.



03

Hire Rates



03

Dry Hire

Starting with a blank canvas to capture content however you want. We will set the space up as you like it, ready for gear to bump in and get started.

Half Day (4hr)
\$250 + GST

Full Day (10hr)
\$450 + GST

Weekends and Public Holidays
25% surcharge

Overtime
\$50 + GST per hour



03

Lighting Preset Hire

Perfect for interviews, piece to cameras, and green screen, book the studio with the backdrop and lights set to go for your production needs. The lighting has adjustable luminance and colour temperature to your shoot's preference.

Includes...

- Key Light: Aputure 600x with Light Dome 150
- Hair Light: Aputure 60x with Softbox or Cutters
- Backdrop Lights: Two Amaran 300x with Lantern 90cm
- Fill light: Reflectors

Half Day (4hr)

\$450 + GST

Full Day (10hr)

\$750 + GST

Weekends and Public Holidays

25% surcharge

Overtime

\$75 + GST per hour



03

Studio Video Production Crew & Gear

For a comprehensive production solution, we offer our in-house expertise and equipment to help capture your content needs. Our rates start with a two person crew to manage the lighting, camera, and audio.

Additional crew and specialist roles available, tailored to your production requirements.

Half Day (4hr)

Starting at \$1,950 + GST

Full Day (10hr)

Starting at \$3,750 + GST

Weekends and Public Holidays

25% surcharge

Overtime

\$250 + GST per hour



04

Equipment



04

Camera, Lighting & Audio

If you're in need of production equipment, we have a full suit of film and photography gear suited to filming in this space. All of our equipment is available for hire upon request at the time of booking, with the assurance that the equipment will be a perfect fit for content capture in this space, and you won't have to worry about transporting it to and from your office or a gear house.

Camera

- Blackmagic Pocket Cinema 6K Pro
- Canon 5D MKii
- Canon 24-70mm f2.8 L
- Canon 50mm f1.2 L
- Canon 70-200mm f2.8L
- Wireless Video Transmission (Holland Mars 400S Pro)
- ATEM Mini Pro (live cutting and/or remote client preview)
- Tripod
- Sony 75" TV on motorised stand (as studio monitor)

Lighting

- Aputure 600X
- Aputure LS60X
- Amaran 200X (2x)
- Aputure Light Dome 150 Softbox
- Aputure Lantern 90cm (2x)

Audio

- Rode Wireless PRO with lapels (32-bit float)
- Rode Wireless GO II with lapels
- Rode VideoMic NTG
- Rode Boompole
- Rode Blimp
- Rode Interview GO
- Sony MDR7506 Monitor Headphones

04

Additional Facilities & Services

Situated in The Signal Box HQ in Chippendale. The studio is one space adjacent to the life of our agency. Our studio office is home to additional facilities available for hire on request.

- Desk Space
- Private Mezzanine as a Breakout Area
- Post Production Suite
- Breakout Spaces
- One Parking Space
- Production Catering
- Specialist Crew Members



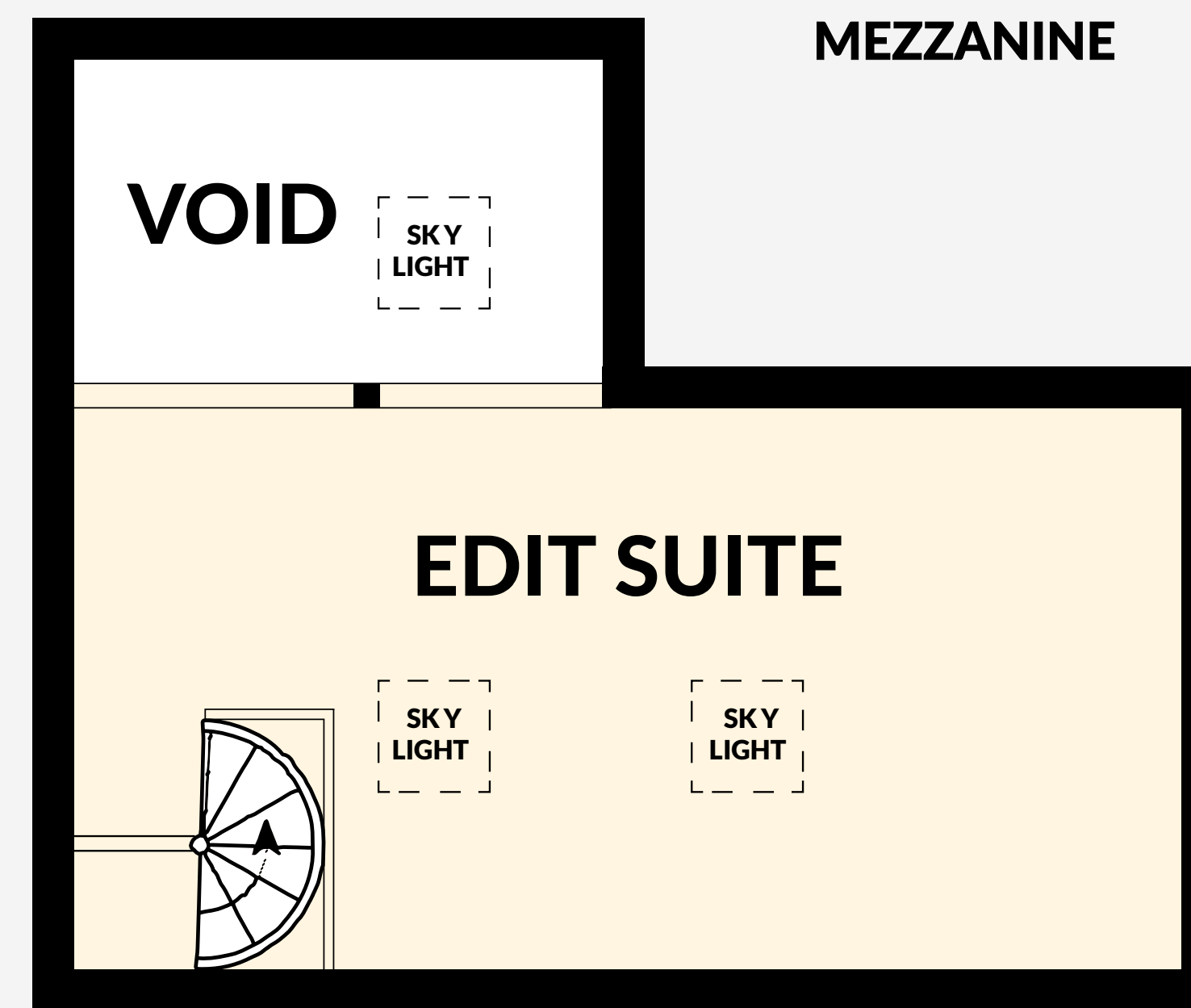
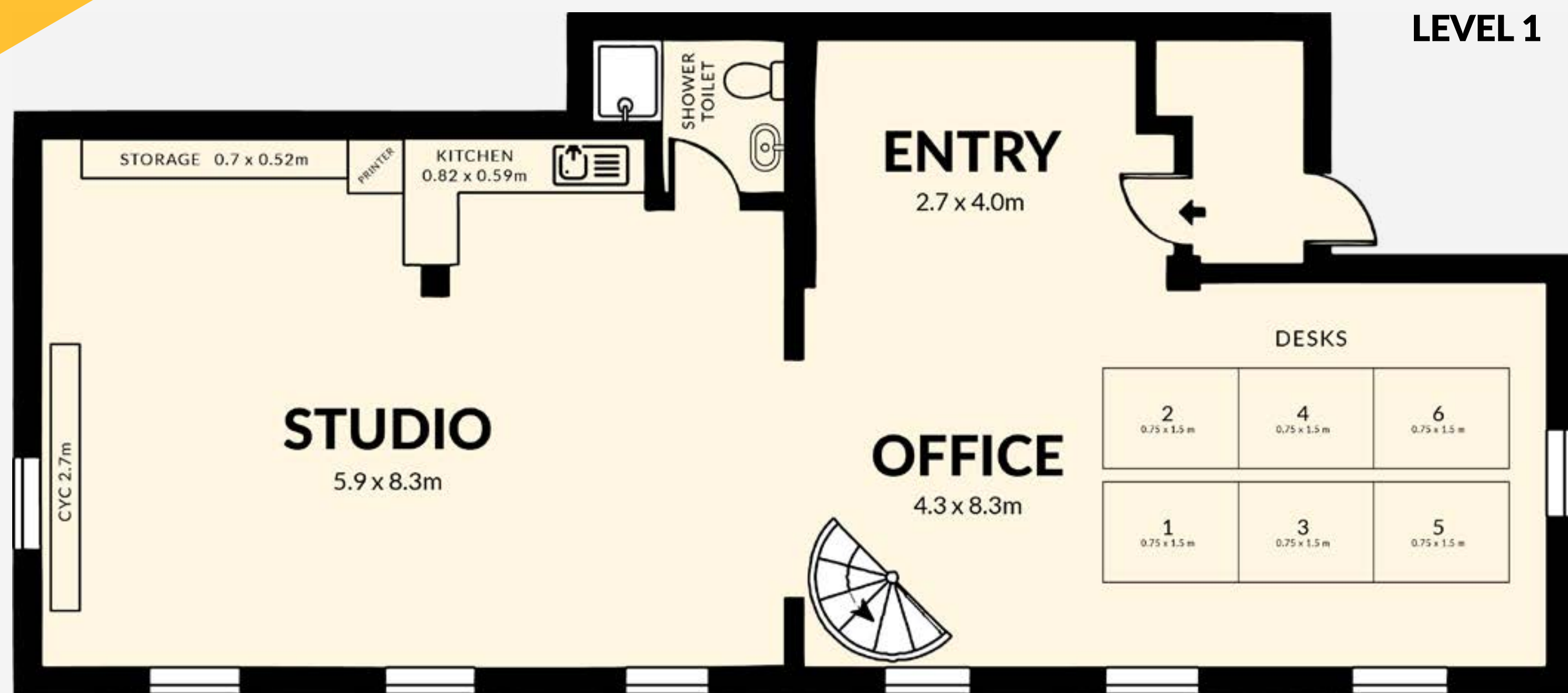
05

Studio Plan



05

Studio Space & Mezzanine



Creativity in Partnership

We are a creative agency, production company, and maker of special projects.

Contact us if you're looking for more than just a studio space, and for a creative partner.

hello@thesignalbox.com.au
+ 61 466 380 704

The Signal Box Pty Ltd Studio

Created by The Signal Box

2024

See you soon 